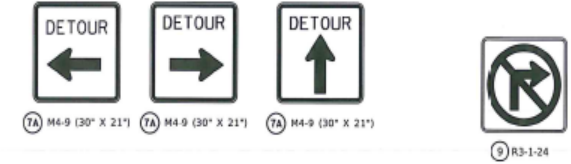
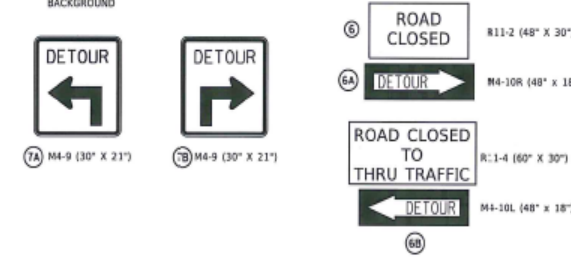
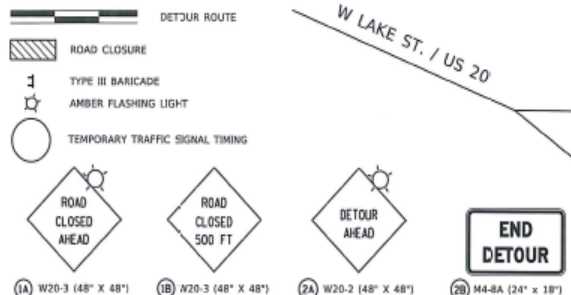
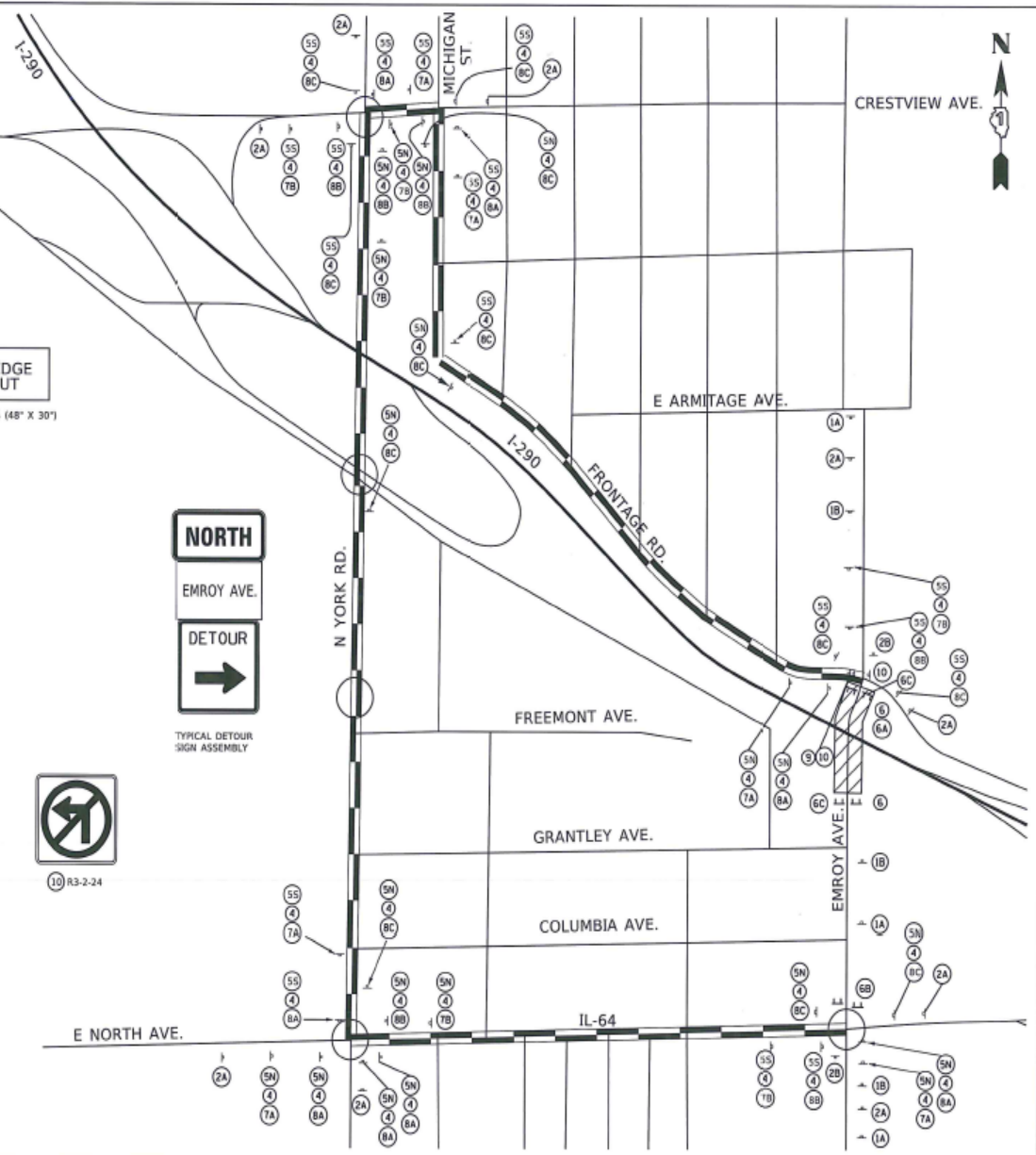


LEGEND:



NOTES:

- TRAFFIC CONTROL AND PROTECTION SHALL BE PERFORMED IN ACCORDANCE WITH SECTION 731 OF THE STANDARD SPECIFICATIONS FOR ROAD AND BRIDGE CONSTRUCTION.
- ADVANCED SIGNING AND TYPE III BARRICADES SHALL BE PLACED IN ACCORDANCE WITH IDOT STANDARD 701901 AND DETAIL TC-21. (TYPICAL MARKING FOR CLOSING STATE HIGHWAYS).
- THE COST OF SUPPLYING, ERECTING AND MAINTAINING BARRICADES, WARNING LIGHTS AND SIGNS SHALL BE INCLUDED IN THE CONTRACT COST FOR TRAFFIC CONTROL AND PROTECTION (SPECIAL).
- ACCESS TO ALL PRIVATE ENTRANCES SHALL BE MAINTAINED.
- TEMPORARY INFORMATION SIGNING SHALL BE PLACED AT EACH END OF EMROY AVENUE FOR THE DURATION OF THE PROJECT, SEE ATTACHED DETAIL.
- ALL DETOUR SIGNS SHALL HAVE AN ORANGE BACKGROUND WITH BLACK LETTERS, EXCEPT AS NOTED.
- ALL SIGNS AND ASSEMBLIES SHALL BE CERTIFIED BY THE CONTRACTOR AS MEETING THE APPLICABLE REQUIREMENTS OF MCHRP REPORT 350, TEST LEVEL 2.



MODEL DRAWN BY: MCHRP REPORT 350, TEST LEVEL 2, DETOUR SIGNING, CONTRACT NO. 60M75

WORK NAME	DESIGNED	REVISIONS
FLUT SCALE	DRAWN	REVISIONS
FLUT DATE	CHECKED	REVISIONS
	DATE	REVISIONS

STATE OF ILLINOIS
DEPARTMENT OF TRANSPORTATION

EMROY AVENUE
DETOUR SIGNING

SCALE: SHEET 1 OF 1 SHEETS STA. TO STA.

F.A.I. RITE	SECTION	COUNTY	TOTAL SHEETS
290	10048-3-1	DUPAGE	37
CONTRACT NO. 60M75			SHEET NO. 3