

FOR SIGN DETAILS SEE SHEET 9

1 ROAD CLOSED AHEAD W20-3-4848

2 DETOUR AHEAD W20-2-4848

3 ROAD CLOSED 2000 FT W20-3-4848

4 LAKE ST RAMP TO CLOSED FOLLOW DETOUR 132 X 48 EAST INTERSTATE 290

5 DETOUR M4-10L-4818

6 DETOUR M4-10R-4818

7 END DETOUR M4-8A-2418

8 RAMP CLOSED R11-X-4830

9 ROAD CLOSED TO THRU TRAFFIC R11-4-6030

10 DETOUR TO EAST INTERSTATE 290 M4-8-2412, M4-5-2412, M3-2-2412, M1-1-3024, M6-3-2115

11 DETOUR TO EAST INTERSTATE 290 M4-8-2412, M4-5-2412, M3-2-2412, M1-1-3024, M5-1L-2115

12 DETOUR TO EAST INTERSTATE 290 M4-8-2412, M4-5-2412, M3-2-2412, M1-1-3024, M6-1L-2115

13 DETOUR TO EAST INTERSTATE 290 M4-8-2412, M4-5-2412, M3-2-2412, M1-1-3024, M5-1R-2115

14 DETOUR TO EAST INTERSTATE 290 M4-8-2412, M4-5-2412, M3-2-2412, M1-1-3024, M6-1R-2115

15 DETOUR TO EAST INTERSTATE 290 M4-8-3015, M4-5-3618, M3-2-3618, M1-1-4536, M5-2R-2115

16 DO NOT ENTER R5-1-4848

- LEGEND:**
- TYPE III BARRICADES CONFORMING TO STD. 701901 WITH 2 FLASHING LIGHTS PER BARRICADE
 - PARTIALLY CLOSED ROAD
 - WORK ZONE
 - DETOUR ROUTE
 - TRAFFIC FLOW
 - TYPE A FLASHING LIGHT

FOR ADDITIONAL DETAILS AT RAMP SEE SHEET 4



USER NAME = SUSERS	DESIGNED - MO	REVISED -
PLOT SCALE = SCALES	DRAWN - TOM	REVISED -
PLOT DATE = SDATES	CHECKED - JA	REVISED -
	DATE - 7/10/2019	REVISED -

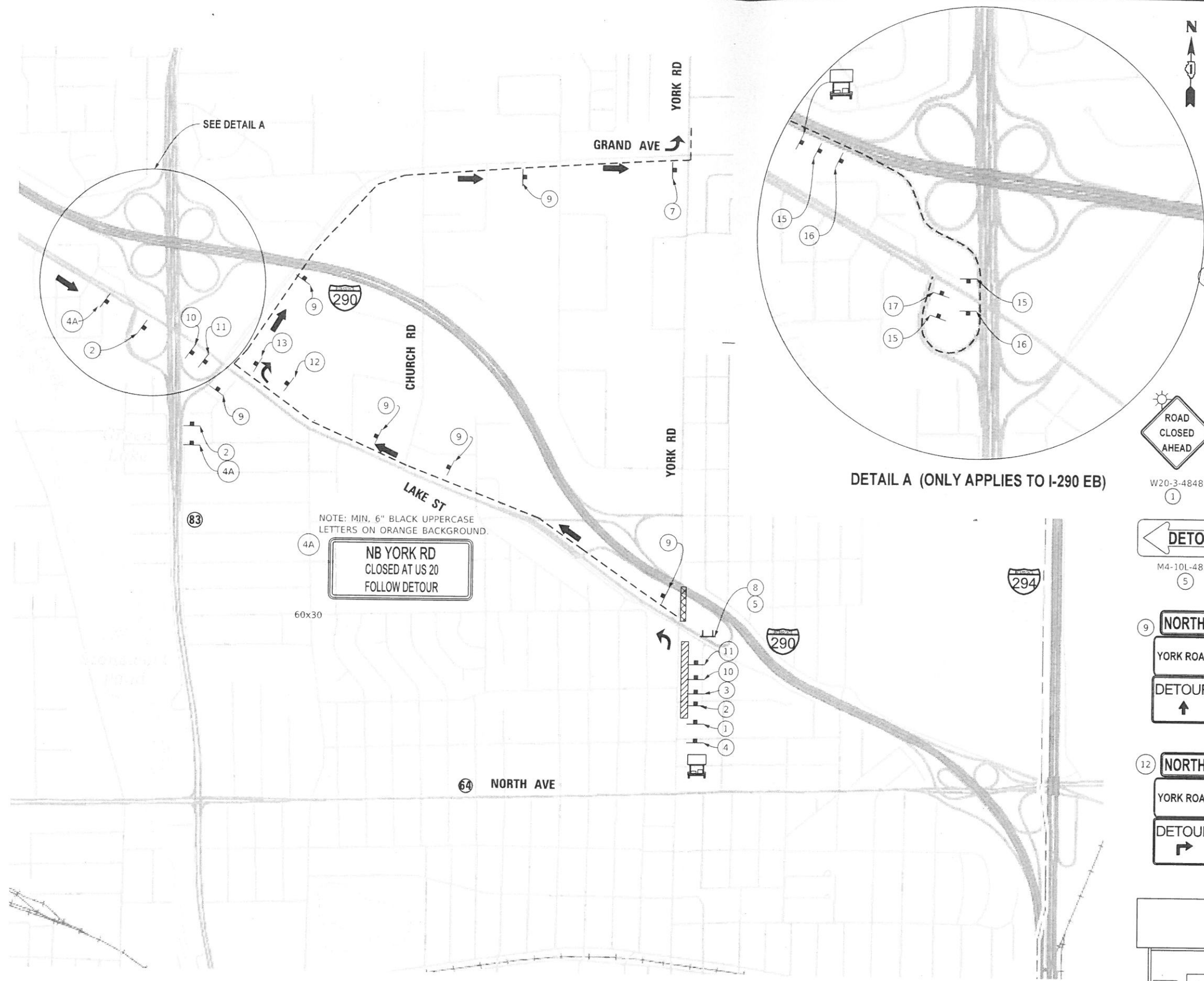
STATE OF ILLINOIS
DEPARTMENT OF TRANSPORTATION

I 290 & YORK ROAD EMERGENCY REPAIR
DETOUR PLAN - LAKE ST RAMP - DAILY

SCALE: SHEET OF SHEETS STA. TO STA.

F.A.P. RTE.	SECTION	COUNTY	TOTAL SHEETS	SHEET NO.
		DUPAGE	10	2
CONTRACT NO.				
ILLINOIS FED. AID PROJECT				

MODEL: SPODELMAMES
FILE NAME: SFILELS



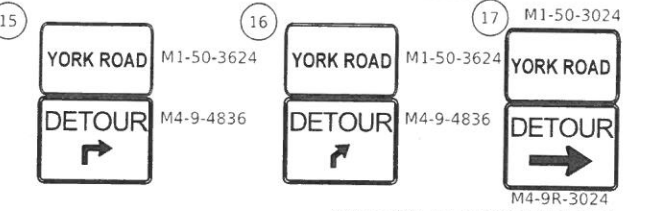
LEGEND:

- TYPE III BARRICADES CONFORMING TO STD. 701901 WITH 2 FLASHING LIGHTS PER BARRICADE
- PARTIALLY CLOSED ROAD
- WORK ZONE
- DETOUR ROUTE
- TRAFFIC FLOW
- TYPE A FLASHING LIGHT

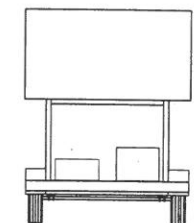
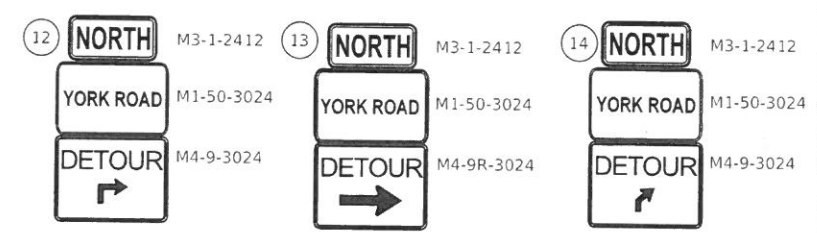
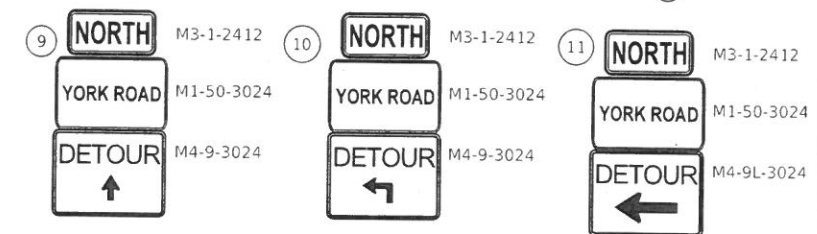
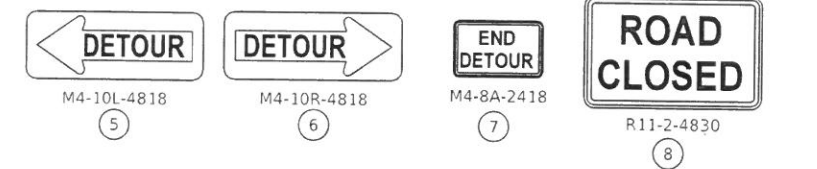
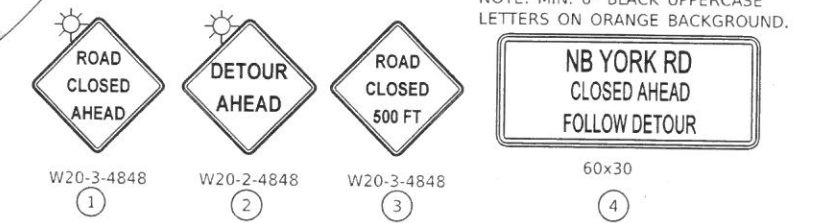
M1-50 SIGNS SHALL BE CUSTOM NAME SIGN. MIN. 6" BLACK UPPERCASE LETTERS ON ORANGE BACKGROUND

FOR ADDITIONAL DETAILS AT CLOSURE SEE SHEETS 5 & 7

COVER SIGNS 1 & 4 DURING NON-WORKING HOURS



NOTE: MIN. 6" BLACK UPPERCASE LETTERS ON ORANGE BACKGROUND.



SUGGESTED MESSAGES (YORK RD)		SUGGESTED MESSAGES I-290	
YORK RD CLOSED	8:00 PM TO 5:00 AM	YORK RD EXIT CLOSED	
YORK RD NIGHT CLOSURES	8/1/19 TO 8/22/19	FOLLOW DETOUR	

DETAIL A (ONLY APPLIES TO I-290 EB)

NOTE: MIN. 6" BLACK UPPERCASE LETTERS ON ORANGE BACKGROUND.

NB YORK RD CLOSED AT US 20 FOLLOW DETOUR

60x30

MODEL: \MODELS\NAMES
FILE NAME: ST1123



USER NAME = SUSERS	DESIGNED - MO	REVISED -
PLOT SCALE = SCALES	DRAWN - TOM	REVISED -
PLOT DATE = SDATES	CHECKED - JA	REVISED -
	DATE - 7/10/2019	REVISED -

STATE OF ILLINOIS
DEPARTMENT OF TRANSPORTATION

I 290 & YORK ROAD EMERGENCY REPAIR
DETOUR PLAN - YORK ROAD - PM

SCALE: SHEET OF SHEETS STA. TO STA.

F.A.P. RTE.	SECTION	COUNTY	TOTAL SHEETS	SHEET NO.
		DUPAGE	10	3
CONTRACT NO.				
ILLINOIS FED. AID PROJECT				